



Colchester Borough Council

2021 Fear of Crime Survey

Report

Produced By:
Daniel Barton
Research & Change Officer
research@colchester.gov.uk

Contents

| | Pages |
|---|-------|
| Introduction | 3 |
| Section One - Demographic Profile | |
| A. The wards that respondents live within | |
| B. Respondents home postcodes | |
| C. How long have respondents lived within the borough | |
| D. Gender | |
| E. Age group | 4-12 |
| F. Ethnicity | |
| G. Sexual orientation | |
| H. Disability | |
| I. Social media usage | |
| Section Two – Crime in your Local Area | |
| Q1. In the past 12 months, have you been a victim of any form of crime? | |
| Q2. What type of crime(s) were you a victim of? | |
| Q3. On a scale of 1 to 5, how much would you say that your daily life is affected by Crime? | |
| Q4. Compared to other towns across the UK, do you think the level of crime in Colchester is Higher or Lower than the national average? | 13-22 |
| Q5. What type of crimes do you feel are more of a problem in your community? | |
| Q7. Do you feel there needs to be more police patrols in your local area? | |
| Q8. Do you agree or disagree that police in your local area treat people fairly and with respect? | |
| Q9. Do you feel informed about local policing and crime prevention activities, if not, how would you prefer to be informed? | |
| Section Three – Fear of Crime | |
| Q10. Thinking about crime in your local community, and the wider Colchester borough, how worried are you about being a victim of crime? | |
| Q11. Thinking more about your local area, how worried are you about being a victim of the following crimes? | 23-29 |
| Q12. Are there any other types of crime that you are particularly worried about? | |
| Q14. On a scale of 1 to 5, how safe do you feel in the following places? | |
| Q15. Has the Covid-19 pandemic changed the way you feel about crime and safety? | |

Introduction

To assist Colchester Borough Council and the local policing service in understanding how residents feel about crime in their local community and the borough as a whole, a survey was created to capture residents feedback and feelings about this subject. The survey also aimed to establish whether residents themselves have been a victim of crime, or fear becoming a victim.

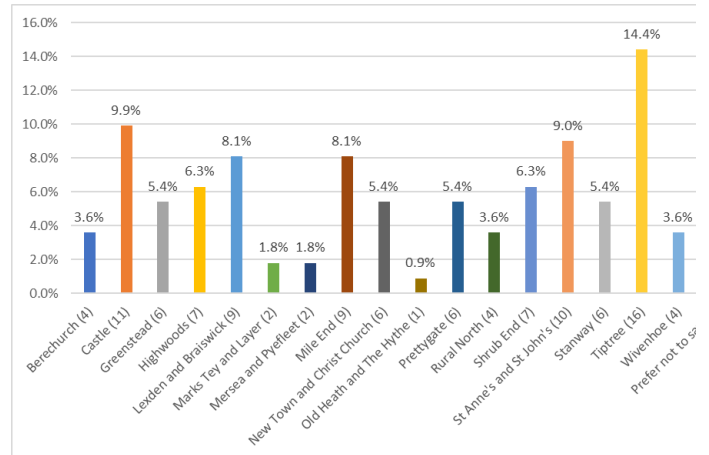
The data collected by the survey will be beneficial in helping the council and police to plan future community safety and crime prevention services.

The survey was launched on the 19 July 2021 and ran for a period of four weeks, captured a total of 111 responses.

Section One - Demographic Profile

A. The Wards that Respondents Live Within

| Ward Name | Count | % |
|----------------------------|-------|-------|
| Berechurch | 4 | 3.6% |
| Castle | 11 | 9.9% |
| Greenstead | 6 | 5.4% |
| Highwoods | 7 | 6.3% |
| Lexden and Braiswick | 9 | 8.1% |
| Marks Tey and Layer | 2 | 1.8% |
| Mersea and Pyefleet | 2 | 1.8% |
| Mile End | 9 | 8.1% |
| New Town and Christ Church | 6 | 5.4% |
| Old Heath and The Hythe | 1 | 0.9% |
| Prettygate | 6 | 5.4% |
| Rural North | 4 | 3.6% |
| Shrub End | 7 | 6.3% |
| St Anne's and St John's | 10 | 9.0% |
| Stanway | 6 | 5.4% |
| Tiptree | 16 | 14.4% |
| Wivenhoe | 4 | 3.6% |
| Prefer not to say | 1 | 0.9% |



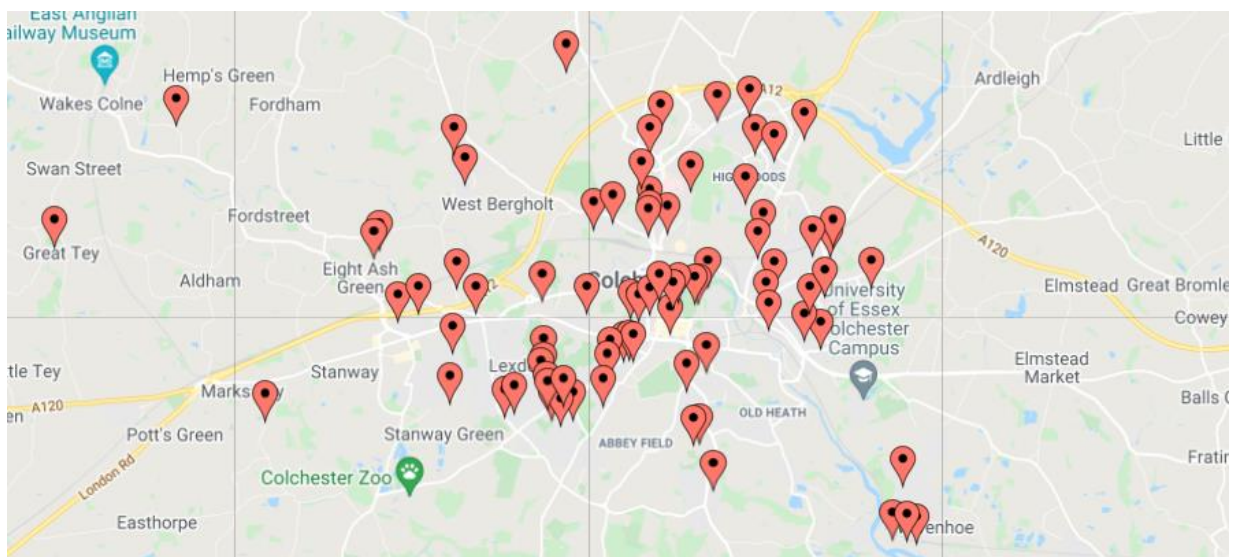
14.4% of respondents (16 people) live within the ward of Tiptree, this was the largest representative group of any ward within the borough.

Other wards with higher levels of participation included Castle (9.9%), St Anne's and St John's (9%), Lexden and Braiswick (8.1%), and Mile End (8.1%).

The ward with the fewest number of responses was Old Heath and The Hythe with only 0.9% (1 person).

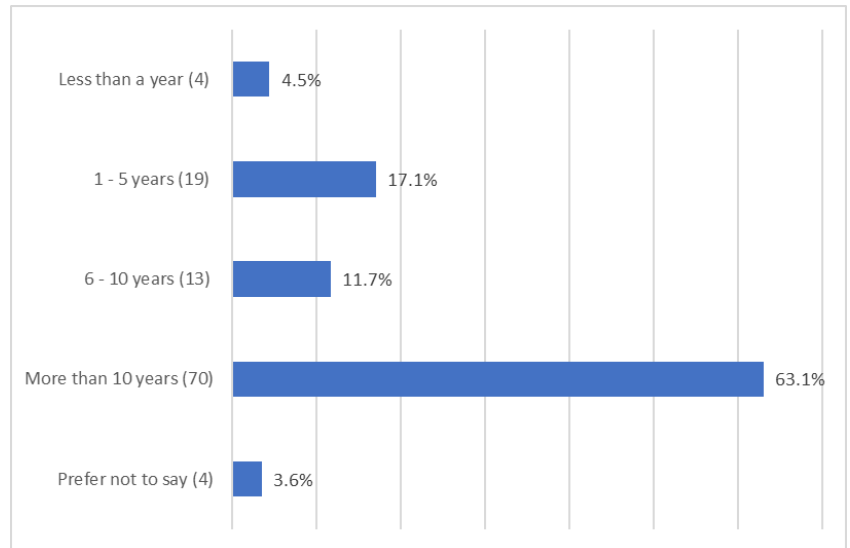
B. Respondent Home Postcodes

103 postcodes were provided by respondents, these have been mapped below to show a visualisation of where respondents live.



C. How long have Respondents Lived within the Borough

- 63.1% said More than 10 years
- 17.1% said 1-5 years
- 11.7% said 6–10 years
- 4.5% said Less than a year
- 3.6% said Prefer not to say



61.1% of respondents (70 people) have lived within the borough for more than 10 years.

17.1% (19 people) have lived in the borough for 1 to 5 years.

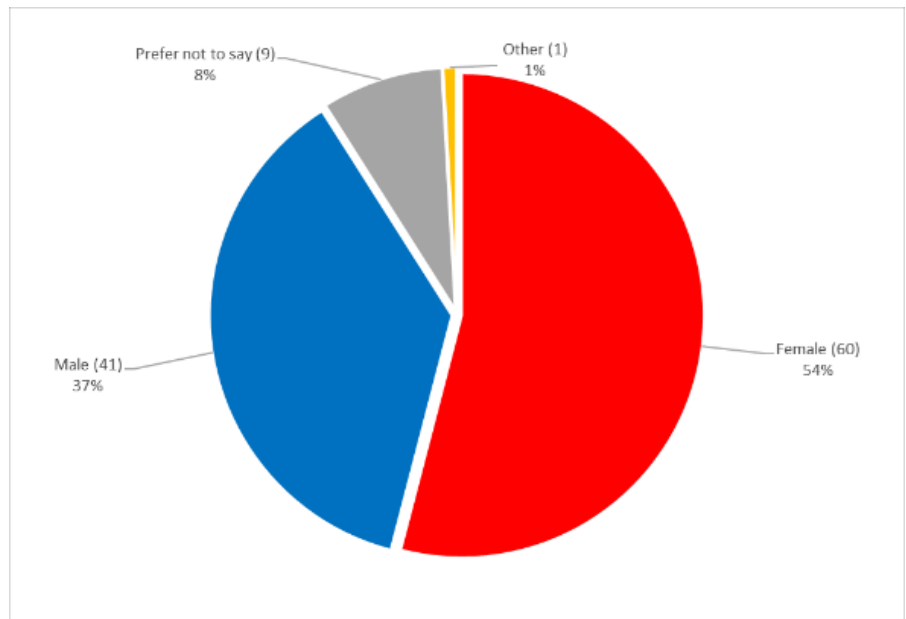
11.7% (13 people) have lived in the borough for 6 to 10 years.

4.5% (4 people) have only lived in the borough for less than a year.

The remaining 3.6% (4 people) chose not to answer this question.

D. Gender

- Female = 54%
- Male = 37%
- Other Gender = 1%
- Prefer not to say = 8%



54% of respondents (60 people) recorded themselves as Female.

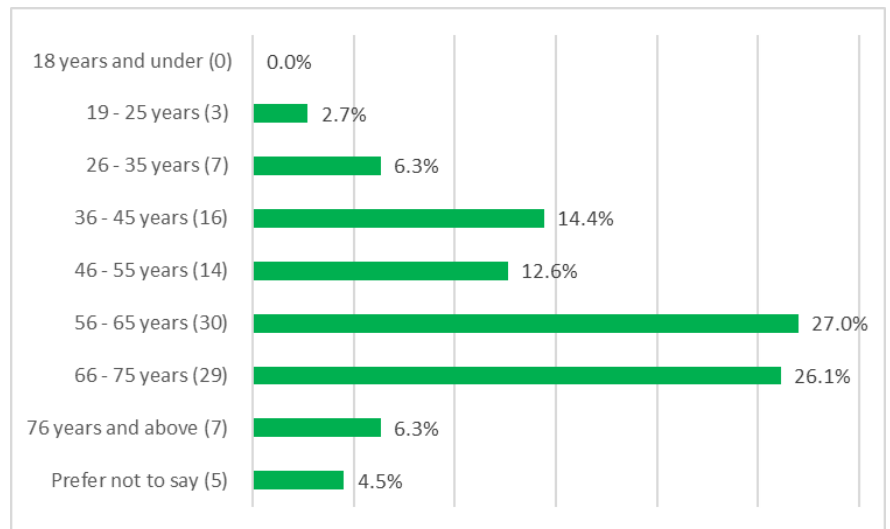
A further 37% (41 people) stated their gender as Male.

1% (1 person) recorded themselves as Other Gender.

The remaining 8% (9 people) chose not to answer this question.

E. Age Group

- 56 - 65 years = 27%
- 66 - 75 years = 26.1%
- 36 - 45 years = 14.4%
- 46 - 55 years = 12.6%
- 26 - 35 years = 6.3%
- 76 years and above = 6.3%
- 19 - 25 years = 2.7%
- 18 years and under = 0.0%
- Prefer not to say = 4.5%



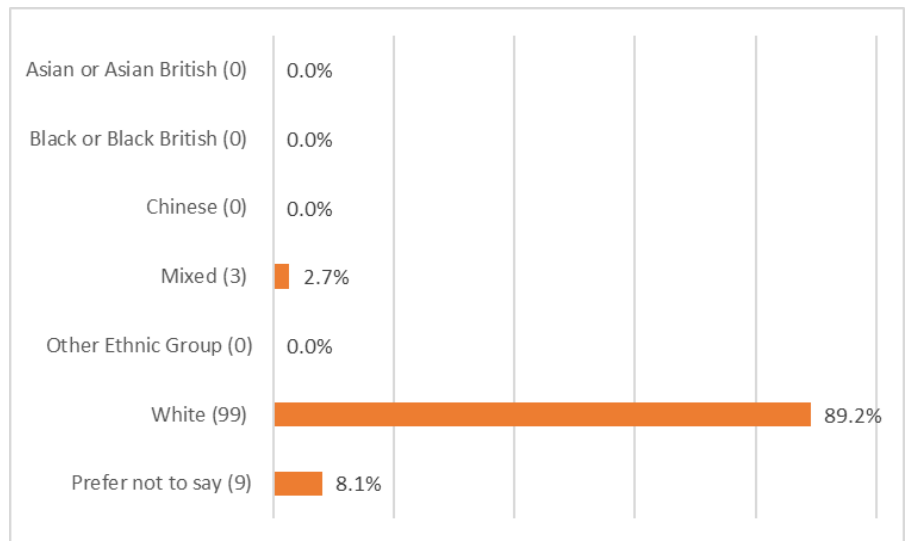
52.2% of respondents (59 people) were aged between 56 and 75 years. This was the largest representative age group surveyed.

The second biggest group were those aged between 36 and 55 years, made up of 27% of respondents (30 people).

Other age groups were less represented, with 0 responses received by those aged 18 years and under.

F. Ethnicity

- White = 89.2%
- Mixed = 2.7%
- Asian or Asian British = 0%
- Black or Black British = 0%
- Chinese = 0%
- Other Ethnic Group = 0%
- Prefer not to say = 8.1%



89.2% (99 people) were of a White ethnicity.

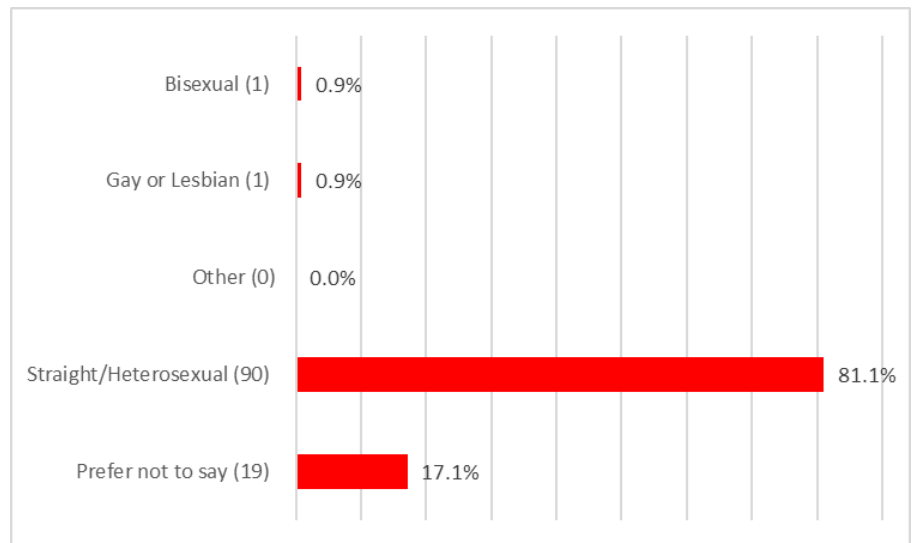
2.7% (3 people) were of a Mixed ethnicity.

The remaining 8.1% (9 people) chose not to answer this question.

Unfortunately, no other ethnic groups were represented, or recorded by those who participated in the survey.

G. Sexual Orientation

- Straight/Heterosexual = 81.1%
- Bisexual = 0.9%
- Gay or Lesbian = 0.9%
- Other = 0.0%
- Prefer not to say = 17.1%



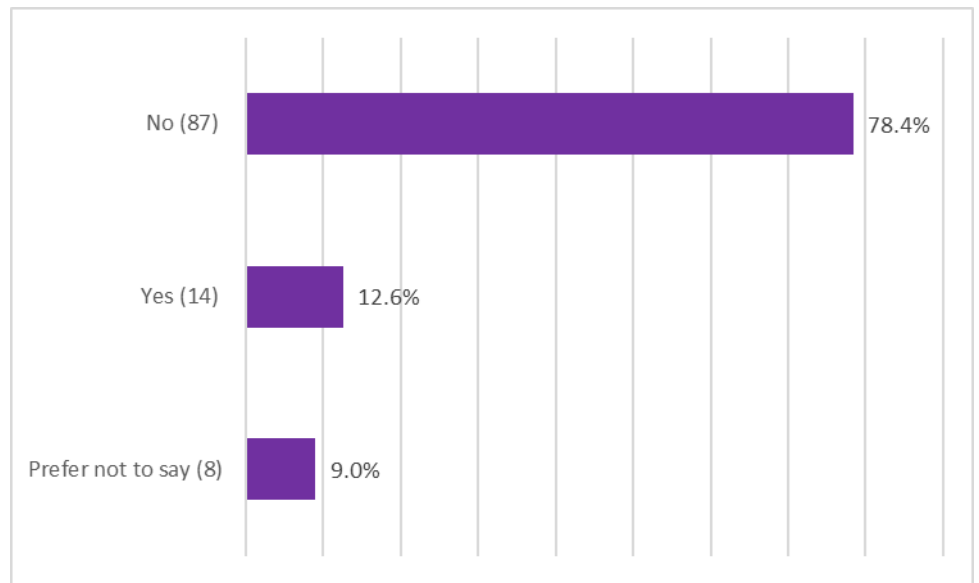
81.1% (90 people) described themselves as being Straight/Heterosexual.

0.9% (1 person) recorded themselves as Bisexual, whilst a further 0.9% (1 individual) recorded themselves as Gay or Lesbian.

No respondents recorded themselves as having an Other sexual orientation.

The remaining 17.1% (19 people) chose not to answer this question.

H. Disability



- 78.4% said No
- 12.6% said Yes
- 9% said Prefer not to say

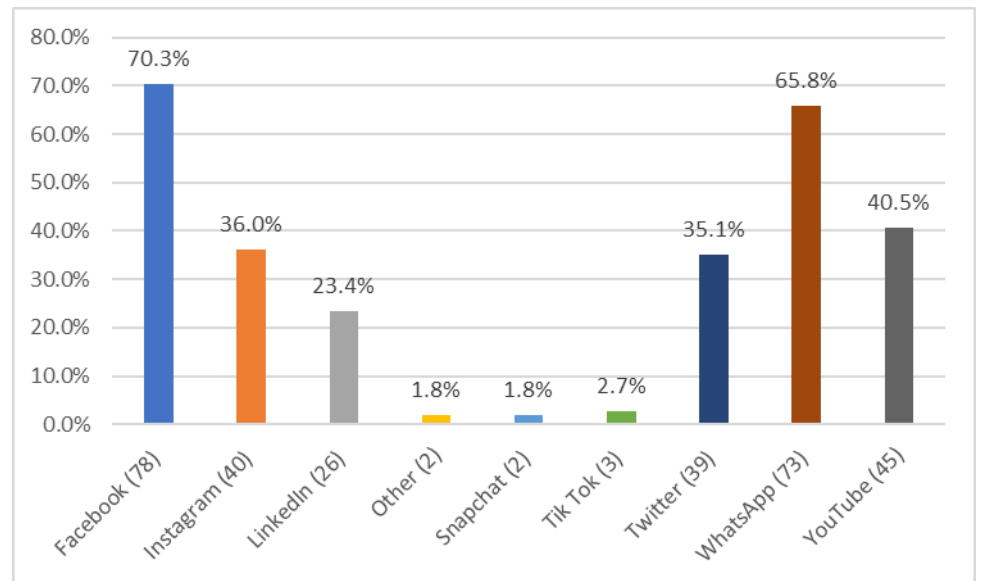
78.4% of respondents (87 people) stated that they Do Not consider themselves to have a disability.

12.6% (14 people) stated that they Do consider themselves to have a disability.

The remaining 9% (8 people) chose not to answer this question.

I. Social Media Usage

- 70.3% use Facebook
- 65.8% use WhatsApp
- 40.5% use YouTube
- 36% use Instagram
- 35.1% use Twitter
- 23.4% LinkedIn
- 2.7% use Tik Tok
- 1.8% use Other
- 1.8% use Snapchat



Facebook is the most commonly used social media platform amongst the respondent group, with 70.3% (78 people) stating that they use this.

Other popular social media platforms include WhatsApp (65.8%), YouTube (40.5%), Instagram (36%), and Twitter (35.1%).

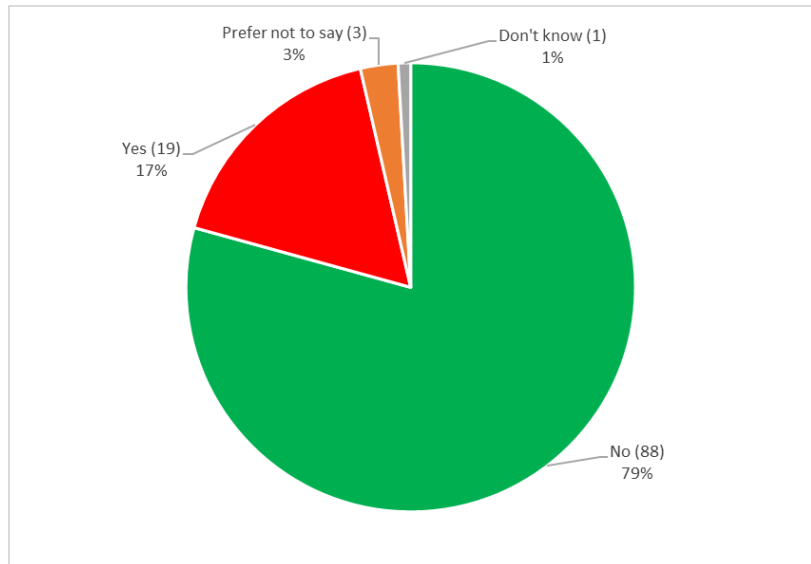
Tik Tok (2.7%) and Snapchat (1.8%) are the least used of the mainstream social media platforms amongst the respondent group.

Other social media platforms used by the group include Signal and Neighbourhood.

Section Two - Crime in your Local Area

Q1. In the past 12 months, have you been a victim of any form of crime?

- 79% said No
- 17% said Yes
- 1% said Don't know (1)
- 3% said Prefer not to say



79% of respondents (88 people) stated that they 'Have Not' been a victim of crime in the past 12 months.

17% (19 people) said they 'Have' been a victim of crime.

3% (3 people) said they would 'prefer not to say', whilst the remaining 1% (1 person) did not answer this question.

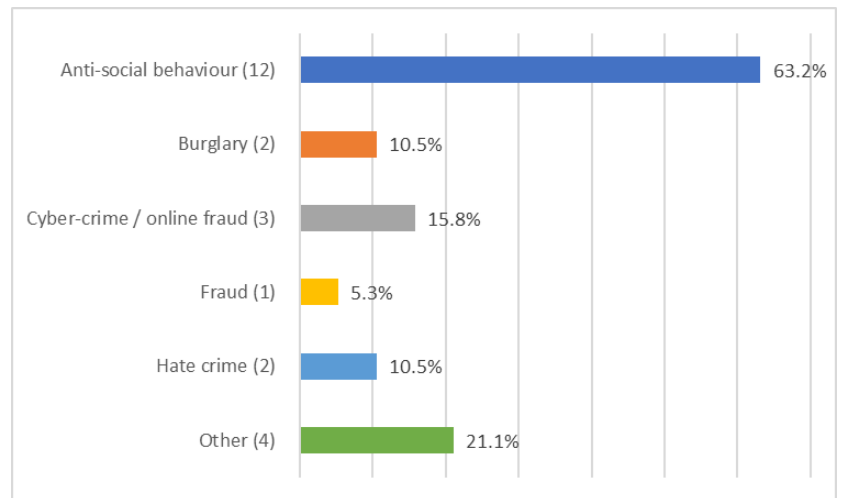
Distribution of Crime Across the Borough

Of the 17% (19 people) who stated that they 'Have' been a victim of crime. These crime incidents were spread across the borough as follows:



Q2. What type of crime(s) were you a victim of?

- 63.2% said Anti-social behaviour
- 21.1% said Other
- 15.8% said Cyber-crime / online fraud
- 10.5% said Burglary
- 10.5% said Hate crime
- 5.3% said Fraud



The 17% of respondents (19 people) who stated that they 'Have' been a victim of crime over the last 12 months were also asked about the type of crime they had been a victim of.

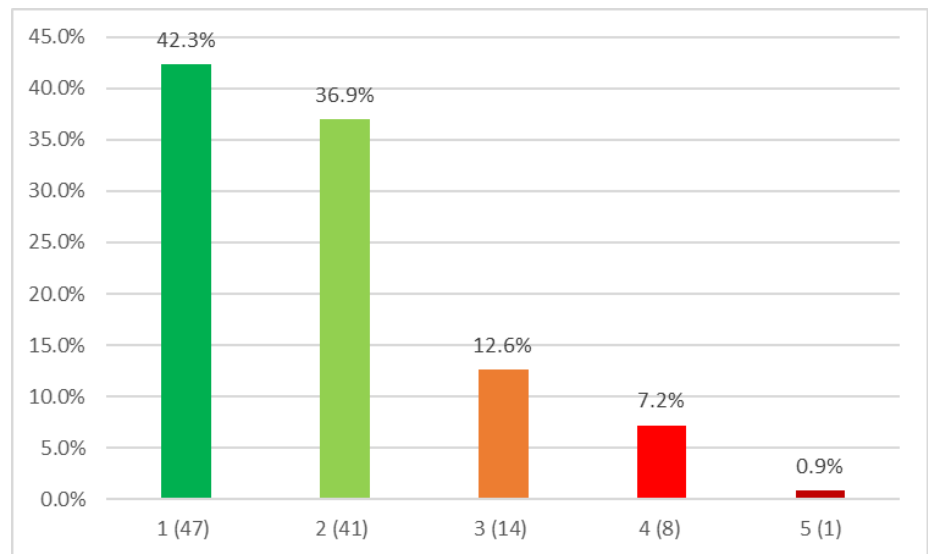
The largest group (63%) were victims of Anti-Social Behaviour.

15.8% experienced Cyber-Crime and/or Online Fraud.

In total, 5 crime types were reported by the group, with the addition of 21.1% also stating that they had experienced Other crimes.

Q3. On a scale of 1 to 5, how much would you say that your daily life is affected by Crime?

- 42.3% gave a score of 1
- 36.9% gave a score of 2
- 12.6% gave a score of 3
- 7.2% gave a score of 4
- 0.9% gave a score of 5



All respondents were asked to rate how much they feel their daily life is affected by crime. Respondents were given a scale of between 1 and 5, 1 equalling 'not affected' and 5 being 'very affected'

42.3% (47 people) gave a rating of '1', indicating that they do not feel their life is affected by crime.

36.9% (41 people) gave a rating of '2', suggesting that their lives are slightly affected by crime.

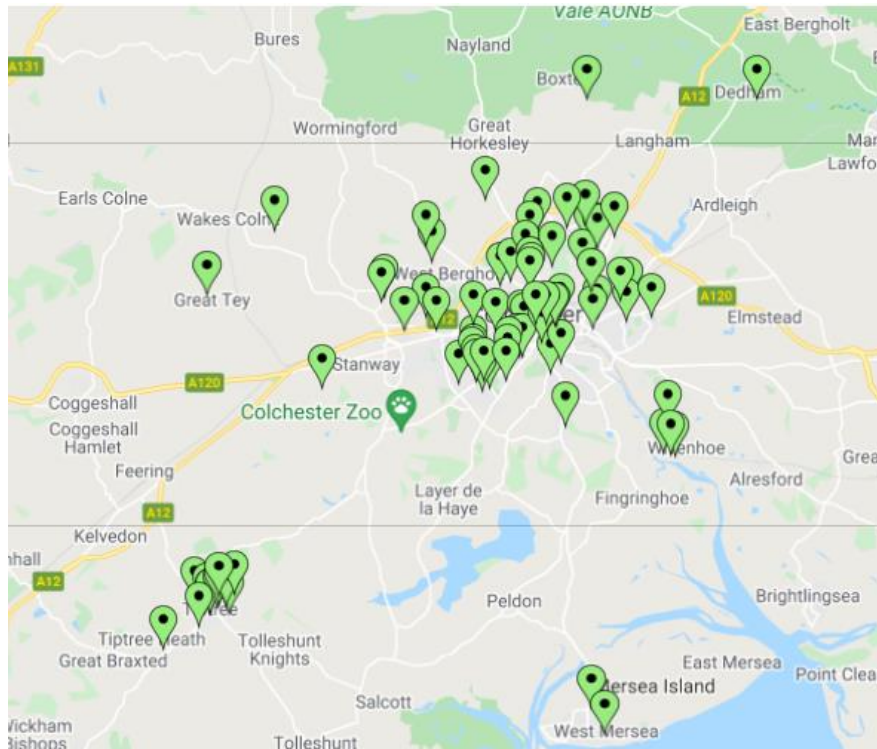
12.6% (14 people) gave a score of '3', implying their lives are moderately affected by crime.

7.2% (8 people) gave a score of '4', suggesting their lives are fairly affected by crime.

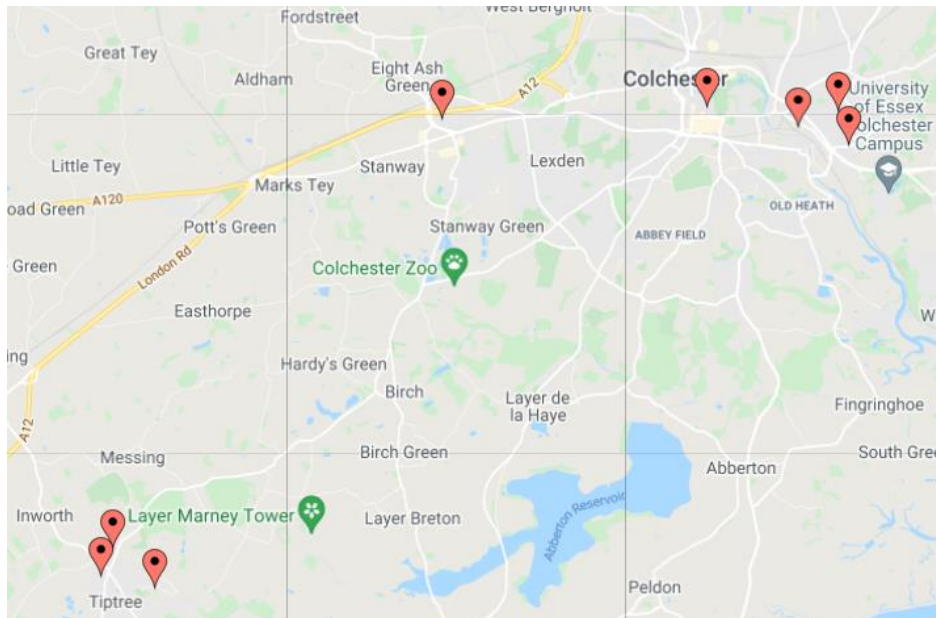
Finally, the remaining 0.9% (1 person) gave a score of '5', indicating that their life is very affected by crime.

Effects of crime on daily life by location

Location of respondents who scored the effects of crime as a '1' or '2'

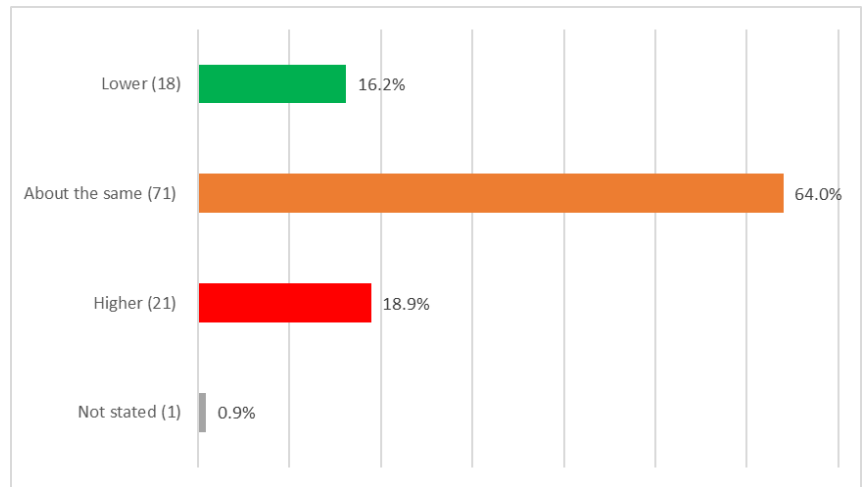


Location of respondents who scored the effects of crime as a '4' or '5'



Q4. Compared to other towns across the UK, do you think the level of crime in Colchester is Higher or Lower than the national average?

- 64% said About the same
- 18.9% said Higher
- 16.2% said Lower
- 0.9% Did not state



Respondents were asked about the level of crime in Colchester compared to other towns across the country, in relation to national averages.

64% of respondents (71 people) felt that crime in Colchester is 'about the same' as other towns.

18.9% (21 people) thought that crime rates in Colchester are 'higher' than other areas.

16.2% (18 people) felt that crime in Colchester is 'lower'.

The remaining 0.9% (1 person) did not answer this question.

Q5. What type of crimes do you feel are more of a problem in your community?

| Crimes Ranked as the Number 1 Concern within the Area | | |
|---|------------------------------|-------|
| | Crime Type | Count |
| 1 | Burglary | 7 |
| 2 | Cyber-crime and online fraud | 5 |
| 3 | Violent crime | 5 |
| 4 | Domestic abuse | 4 |
| 5 | Other | 4 |
| 6 | Hate crime | 1 |
| 7 | Murder or manslaughter | 1 |
| 8 | Rape and sexual assault | 1 |
| 9 | Robbery | 1 |
| 10 | Arson | 0 |
| 11 | Fraud | 0 |
| 12 | Modern slavery | 0 |
| 13 | Sexual harassment | 0 |
| 14 | Stalking and harassment | 0 |
| 15 | Terrorism | 0 |

| Crimes Ranked as the Number 2 Concern within the Area | | |
|---|------------------------------|-------|
| | Crime Type | Count |
| 1 | Burglary | 30 |
| 2 | Domestic abuse | 10 |
| 3 | Robbery | 10 |
| 4 | Cyber-crime and online fraud | 8 |
| 5 | Violent crime | 6 |
| 6 | Other | 5 |
| 7 | Hate crime | 4 |
| 8 | Fraud | 3 |
| 9 | Murder or manslaughter | 1 |
| 10 | Rape and sexual assault | 1 |
| 11 | Sexual harassment | 1 |
| 12 | Stalking and harassment | 1 |
| 13 | Arson | 0 |
| 14 | Modern slavery | 0 |
| 15 | Terrorism | 0 |

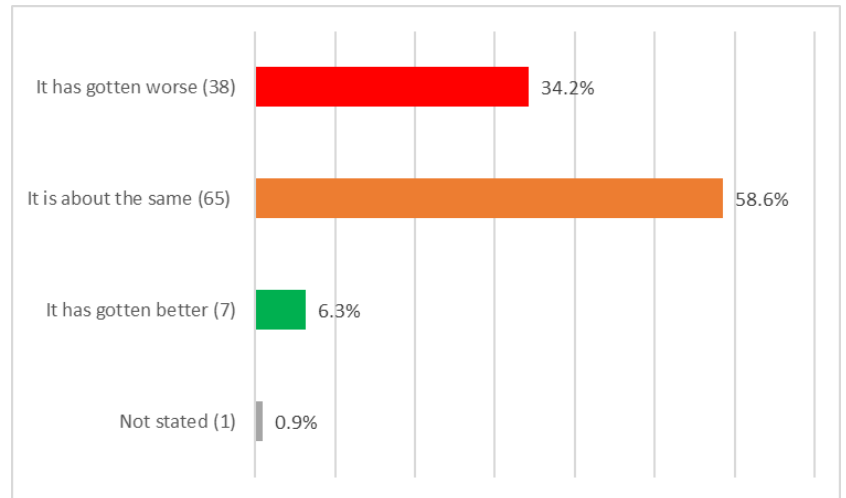
| Crimes Ranked as the Number 3 Concern within the Area | | |
|---|------------------------------|-------|
| | Crime Type | Count |
| 1 | Burglary | 14 |
| 2 | Cyber-crime and online fraud | 13 |
| 3 | Violent crime | 12 |
| 4 | Robbery | 9 |
| 5 | Other | 9 |
| 6 | Domestic abuse | 7 |
| 7 | Fraud | 3 |
| 8 | Stalking and harassment | 3 |
| 9 | Modern slavery | 3 |
| 10 | Hate crime | 2 |
| 11 | Rape and sexual assault | 2 |
| 12 | Sexual harassment | 1 |
| 13 | Murder or manslaughter | 0 |
| 14 | Arson | 0 |
| 15 | Terrorism | 0 |

Respondents were asked to rank the top 3 crimes that they feel are most prevalent in their local community.

- 'Burglary' appears as the highest ranked crime, obtaining the most 1st, 2nd and 3rd ranked choices.
- 'Cyber-crime and online fraud' are the second most noted crimes, receiving the second highest number of 1st ranked choices, in addition to also appearing high within the 2nd and 3rd choice selections.
- 'Violent' crime is the third highest ranked crime.
- Both 'Arson' and 'Terrorism' were not selected by any respondents, suggesting that residents do not consider these crimes to be an issue locally.

Q6. Over the past 12 months do you think the service provided by your local police force has changed?

- 58.6% said It is about the same
- 34.2% said It has gotten worse
- 6.3% said It has gotten better
- 0.9 did not state



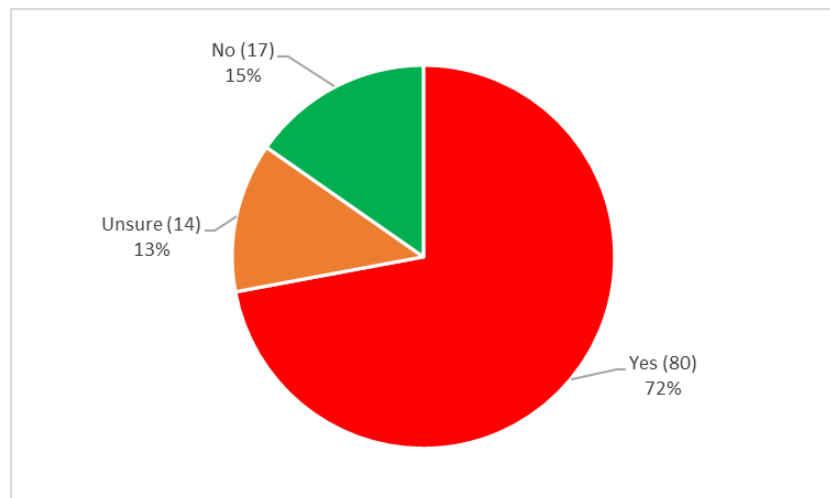
When asked about services provided by the local police over the past 12 months, 58.6% of respondents (65 people) felt that these were 'about the same'.

34.2% (38 people) felt that local policing services had 'gotten worse, whilst 6.3% (7 people) felt they 'had gotten better.

The remaining 0.9% (1 person) did not answer this question.

Q7. Do you feel there needs to be more police patrols in your local area?

- 72% said Yes
- 15% said No
- 13% said Unsure



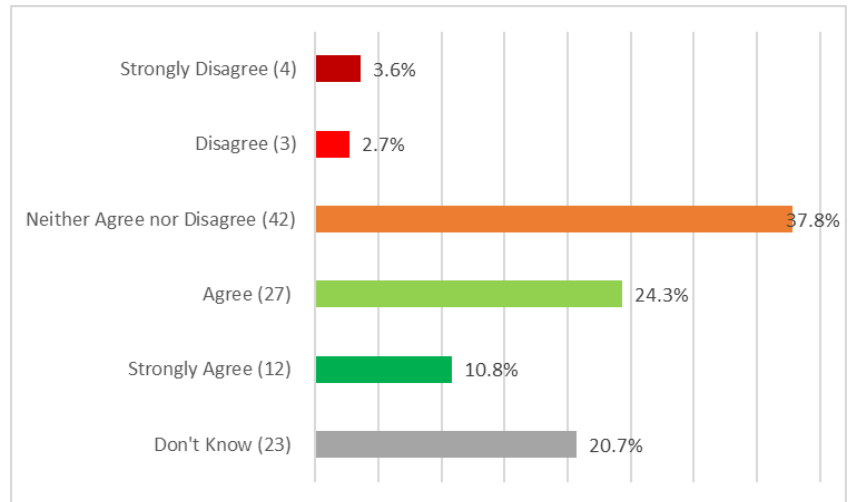
72% of respondents (80 people) felt that more policing 'is needed' in their local area.

15% (17 people) felt that more policing 'is not needed' in their area.

The remaining 13% (14 people) were 'Unsure'.

Q8. Do you agree or disagree that police in your local area treat people fairly and with respect?

- 3.6% Strongly disagree
- 2.7% Disagree
- 37.8% Neither agree nor disagree
- 24.3% Agree
- 10.8% Strongly agree
- 20.7% Don't know



37% of respondents (42 people) answered 'Neither Agree or Disagree) when asked if police in their local area treat people fairly and with respect.

A combined 35.1% (39 people) answered with either 'Agree' or 'Strongly Agree'.

Whilst 6.3% (7 people) said 'Disagree' or 'Strongly Disagree'.

The remaining 20.7% (23 people) 'Did not know'.

Q9. Do you feel informed about local policing and crime prevention activities, if not, how would you prefer to be informed?

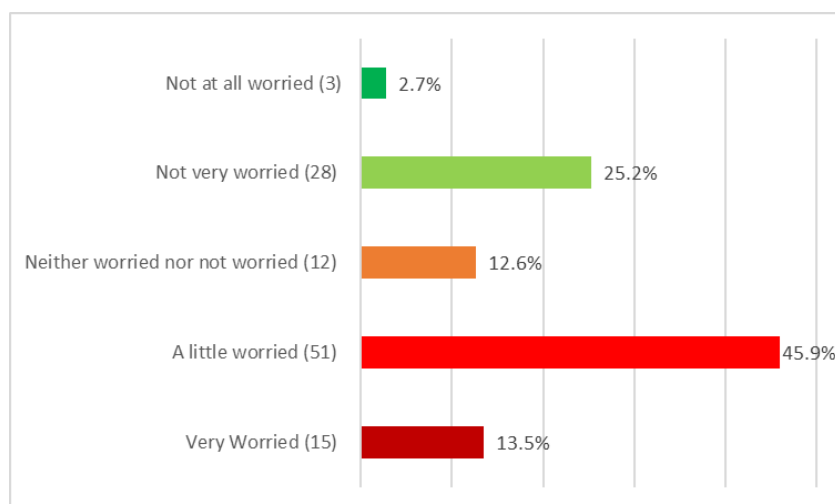
Responses to this question have been collated where possible into the below categories to show common themes:

| Suggestions | Count |
|---|-------|
| Regular email updates/newsletters | 11 |
| Social media | 11 |
| Regular paper newsletters/leaflets sent to residents | 5 |
| More visibility | 4 |
| Police are not interested in engaging with residents | 3 |
| Local media | 3 |
| Online information | 2 |
| Positive reinforcements in the media. Details of solved crimes/fines etc | 2 |
| I would prefer to see the police patrols in person | 2 |
| Contact through schools | 2 |
| More accessible meetings outside of 'normally working hours' ¹ | 2 |
| Community forums | 1 |
| Text messages (like NHS or GOV do) | 1 |
| Community boards | 1 |
| National broadcasting stations | 1 |
| Community/council social media groups | 1 |
| Community meetings | 1 |
| Pre-arranged house calls | 1 |

Section Three - Fear of Crime

Q10. Thinking about crime in your local community, and the wider Colchester borough, how worried are you about being a victim of crime?

- 45.9% are A little worried
- 25.2% are Not very worried
- 13.5% are Very Worried
- 12.6% are Neither worried nor not worried
- 2.7% are Not at all worried



When asked about how worried people feel about becoming a victim of crime, 45.9% of respondents (51 people) stated that they are 'a little worried'.

In addition to the above, a further 13.5% (15 people) said that they were 'very worried' about crime.

However, 25.2% (28 people) were 'not very worried', whilst 2.7% (3 people) were 'not at all worried'.

The remaining 12.6% (12 people) were 'neither worried nor not worried'.

Worries about becoming a victim of crime by location

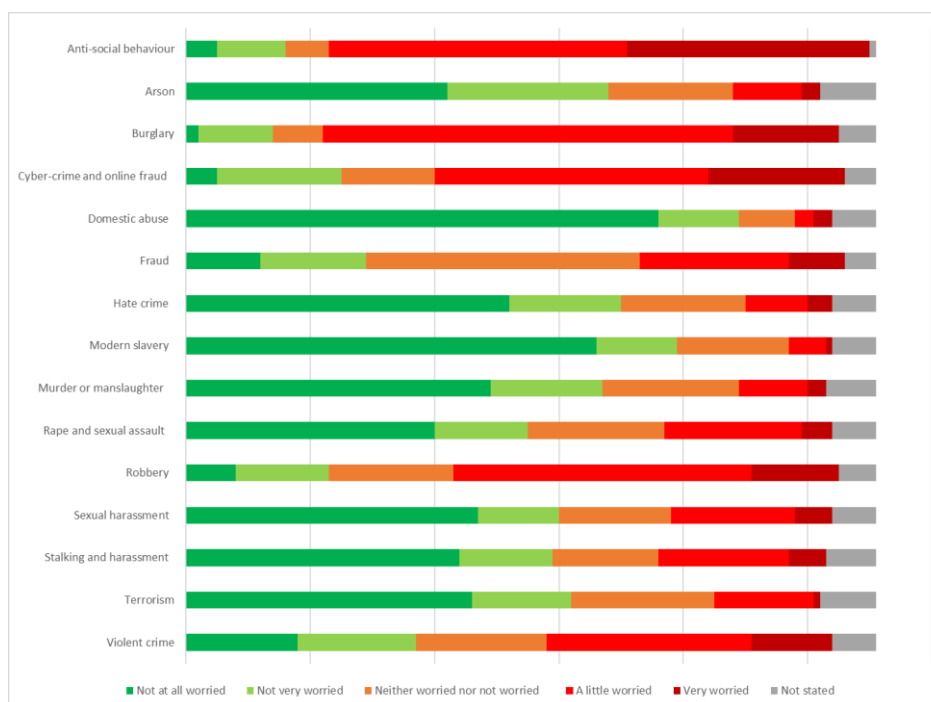
Location of respondents who answered, 'not worried' and 'not at all worried'



Location of respondents who answered, 'a little worried' and 'very worried'



Q11. Thinking more about your local area, how worried are you about being a victim of the following crimes?



| | Not at all worried | Not very worried | Neither worried nor not worried | A little worried | Very worried | Not stated |
|------------------------------|--------------------|------------------|---------------------------------|------------------|--------------|------------|
| Anti-social behaviour | 5 | 11 | 7 | 48 | 39 | 1 |
| Arson | 42 | 26 | 20 | 11 | 3 | 9 |
| Burglary | 2 | 12 | 8 | 66 | 17 | 6 |
| Cyber-crime and online fraud | 5 | 20 | 15 | 44 | 22 | 5 |
| Domestic abuse | 76 | 13 | 9 | 3 | 3 | 7 |
| Fraud | 12 | 17 | 44 | 24 | 9 | 5 |
| Hate crime | 52 | 18 | 20 | 10 | 4 | 7 |
| Modern slavery | 66 | 13 | 18 | 6 | 1 | 7 |
| Murder or manslaughter | 49 | 18 | 22 | 11 | 3 | 8 |
| Rape and sexual assault | 40 | 15 | 22 | 22 | 5 | 7 |
| Robbery | 8 | 15 | 20 | 48 | 14 | 6 |
| Sexual harassment | 47 | 13 | 18 | 20 | 6 | 7 |
| Stalking and harassment | 44 | 15 | 17 | 21 | 6 | 8 |
| Terrorism | 46 | 16 | 23 | 16 | 1 | 9 |
| Violent crime | 18 | 19 | 21 | 33 | 13 | 7 |

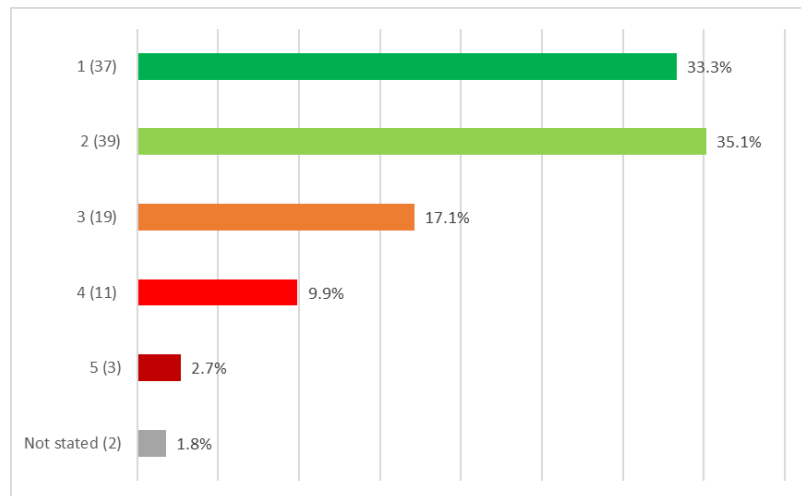
Q12. Are there any other types of crime that you are particularly worried about?

Responses to this question have been collated where possible into the below categories to show common themes:

| Type of Crime | Count |
|--|-------|
| Drug related offences | 12 |
| Speeding motorists | 9 |
| Aggressive/dangerous motorists | 7 |
| Vandalism/criminal damage | 4 |
| Cycling on payments | 2 |
| Noise related crime | 2 |
| Alcohol related crimes | 2 |
| Cars racing around the streets late at night | 1 |
| Assault on and by dogs | 1 |
| Being shouted at or attacked in the street | 1 |
| Dog theft | 1 |
| Dangerous dogs off leads | 1 |
| Damage to cars and property | 1 |
| Driving crimes, especially against cyclist. | 1 |
| Littering | 1 |
| Knife crime | 1 |
| Teenage gangs | 1 |
| Violent crimes by younger people | 1 |
| Illegal use of e-scooters illegally | 1 |
| Dangerous parking | 1 |
| Using smartphones while driving | 1 |
| Sexual-assault and rape that appear to have zero consequences for the perpetrators | 1 |

Q13. On a scale of 1 to 5, how much would you say that your daily life is affected by Fear of Crime?

- 33.3% gave a score of 1
- 35.1% gave a score of 2
- 17.1% gave a score of 3
- 9.9% gave a score of 4
- 2.7% gave a score of 5
- 1.8% did not state



Respondents were next asked to rate how much their daily life is affected by fear of crime using a scale of between 1 and 5, 1 equalling 'not affected' and 5 being 'very affected'.

33.3% (37 people) gave a score of '1', indicating that their lives are not affected by fear of crime.

35.1% (39 people) gave a score of '2', suggesting that their lives are slight affected by fear of crime.

17.1% (19 people) gave a score of '3', indicating that their lives are somewhat affected by fear of crime.

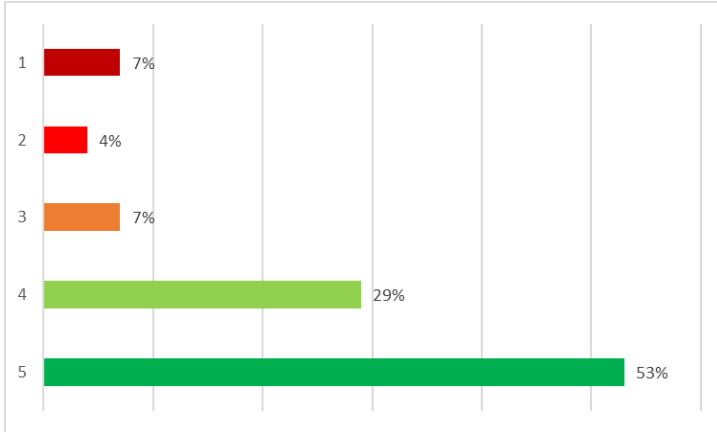
9.9% (11 people) recorded a score of '4', suggested that their lives are reasonably affected by fear of crime.

2.7% (3 people) gave a score of '5', meaning their lives are very affected by fear of crime.

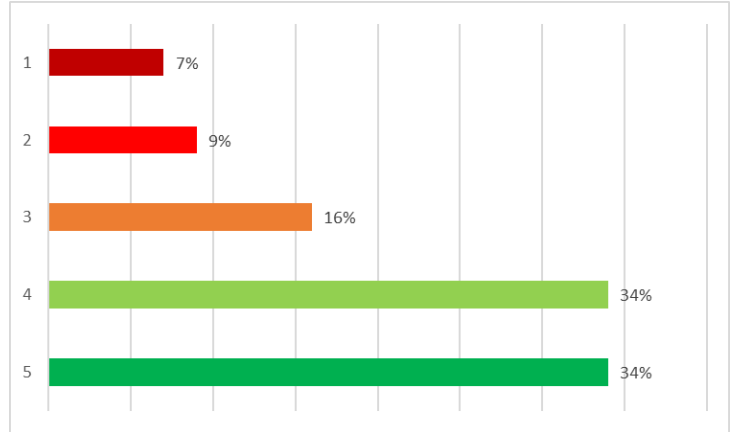
The remaining 1.8% (2 people) did not answer this question.

Q14. On a scale of 1 to 5, how safe do you feel in the following places?

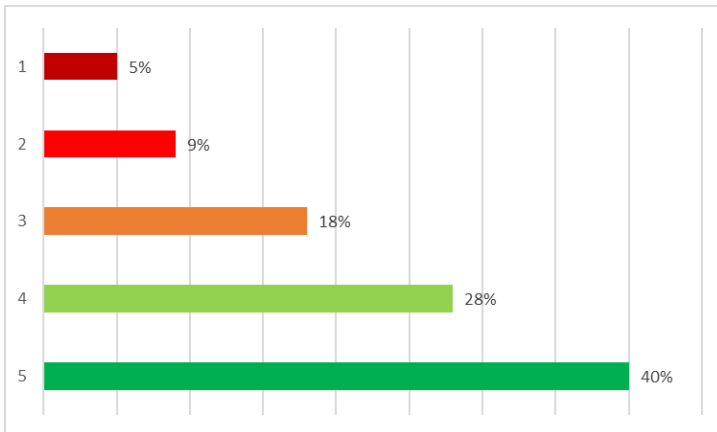
In your own home during the day



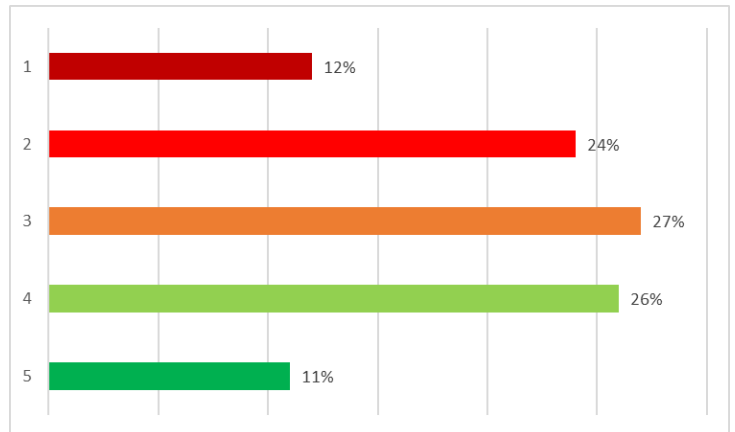
In your own home at night



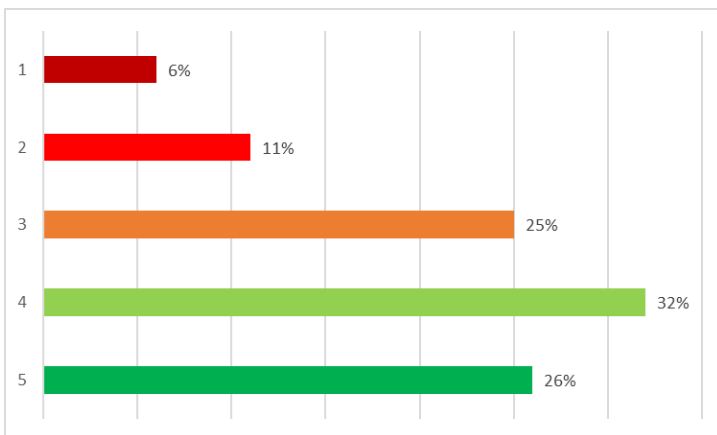
Outside in your local area during the day



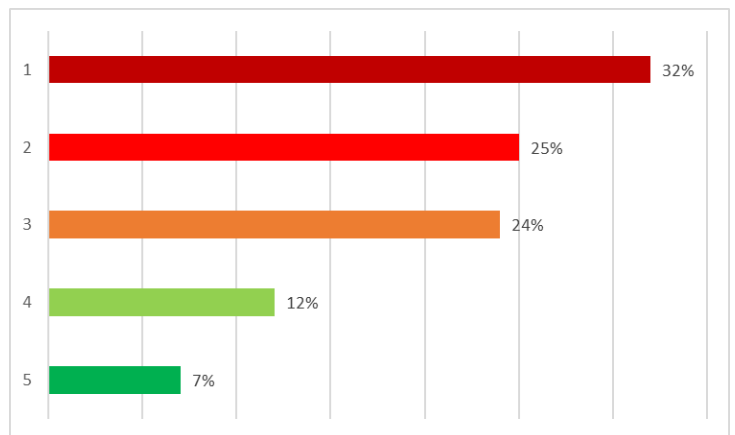
Outside in your local area at night



In Colchester Town Centre during the day

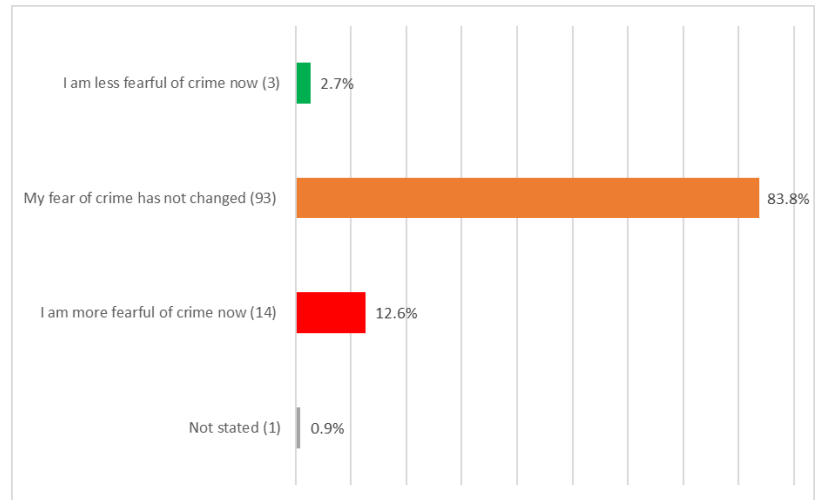


In Colchester Town Centre at night



Q15. Has the Covid-19 pandemic changed the way you feel about crime and safety?

- 83.8% said My fear of crime has not changed
- 12.6% said I am more fearful of crime now
- 2.7% said I am less fearful of crime now
- 0.9% Did not state



83.8% of respondents (93 people) felt that their feelings around fear of crime 'have not changed' as a result of the pandemic.

However, 12.6% (14 people) now feel 'more fearful' than prior to the pandemic.

2.7% (3 people) said that they feel 'less fearful' since the pandemic.

The remaining 0.9% (1 person) did not answer this question.